

# **Fred Bamatter Award Lecture**

## **Understanding and improving respiratory care of preterm neonates**

Prof Sven Schulzke, MD, MSc, FRACP

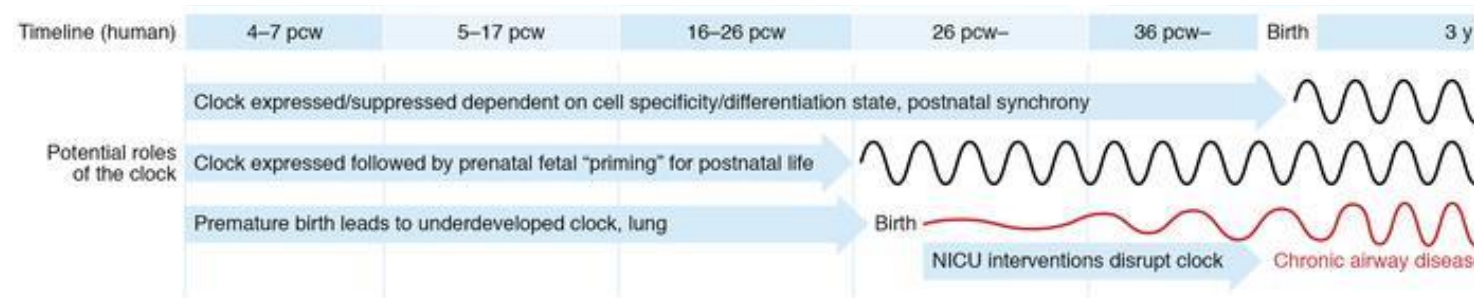
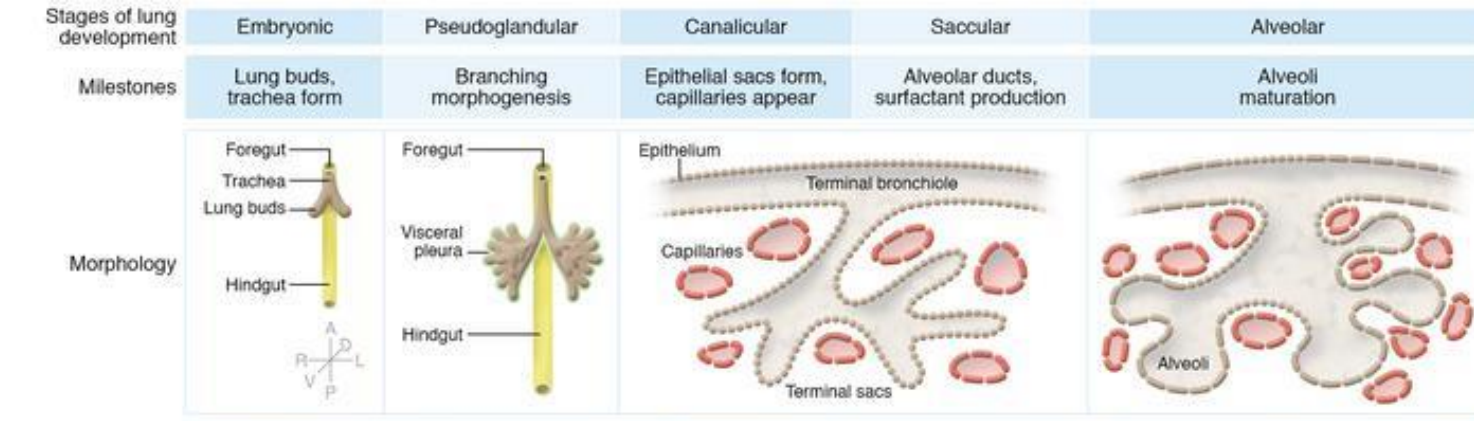
Department of Neonatology

University Children's Hospital Basel UKBB

1x3

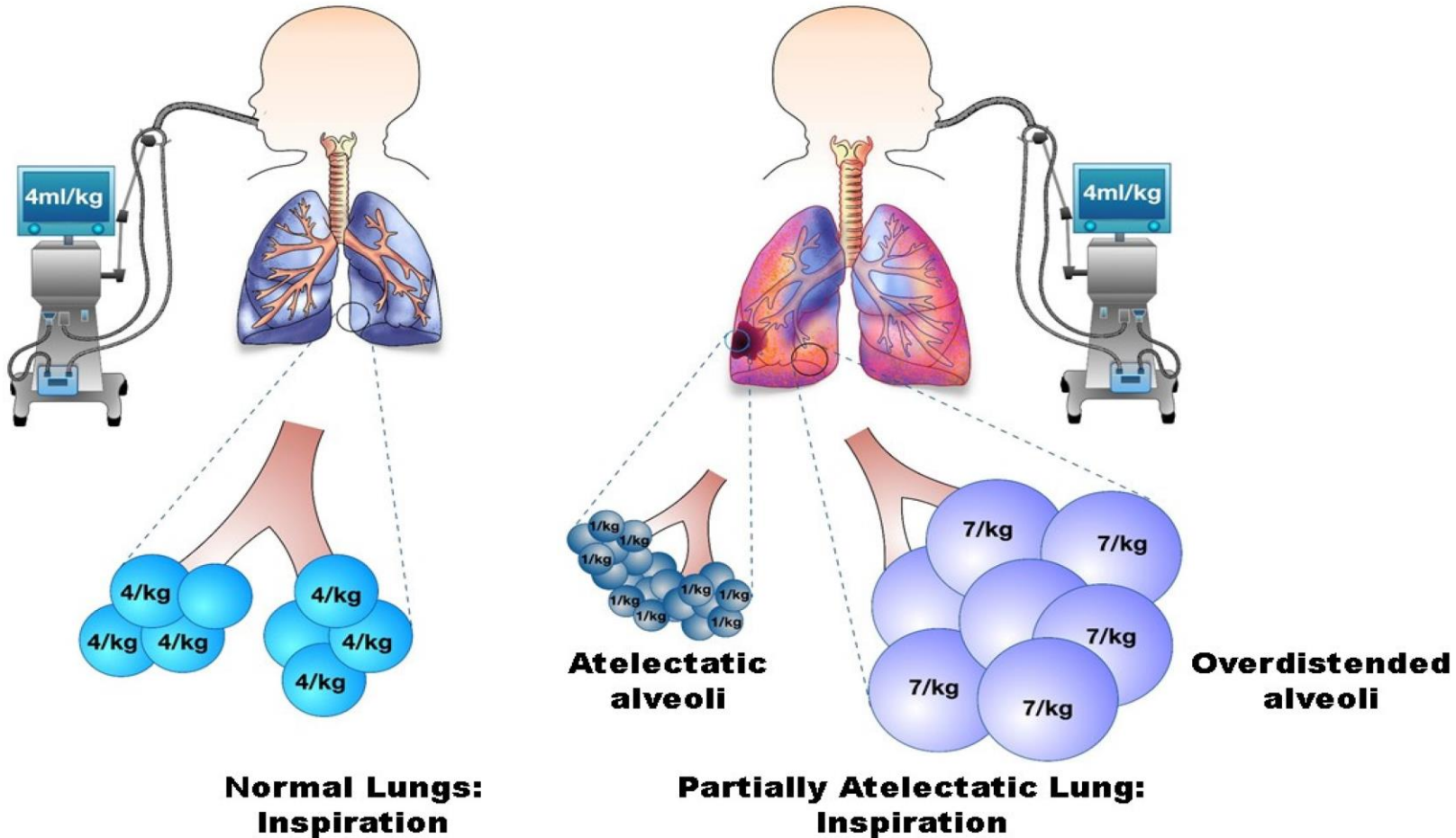
Important aspects for medical students  
and junior doctors

# Developmental stages of the lung

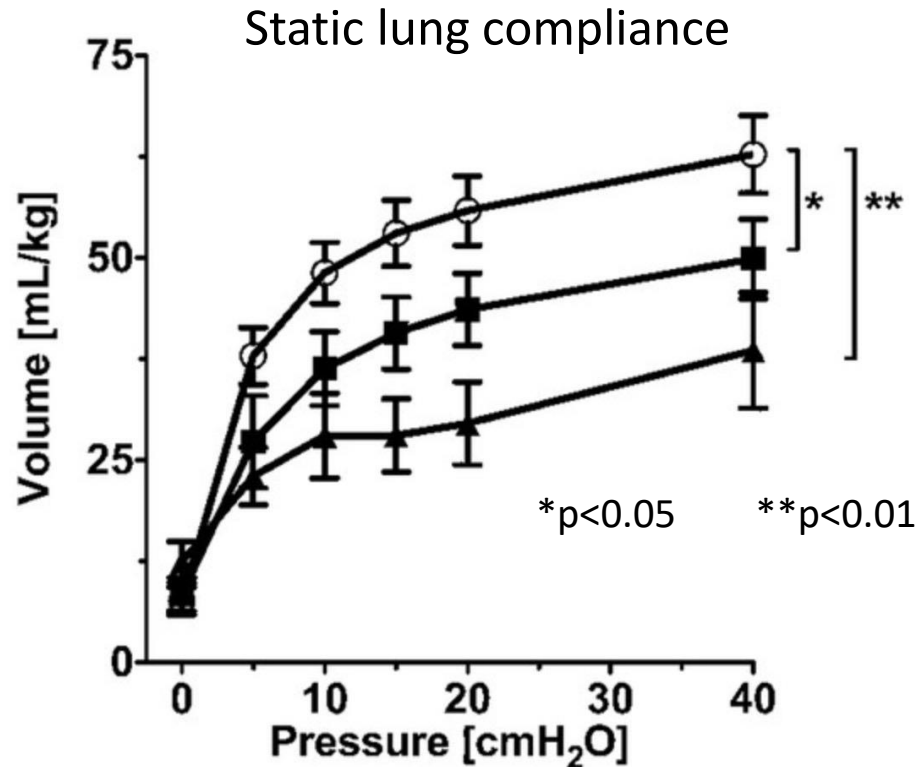


>10 y

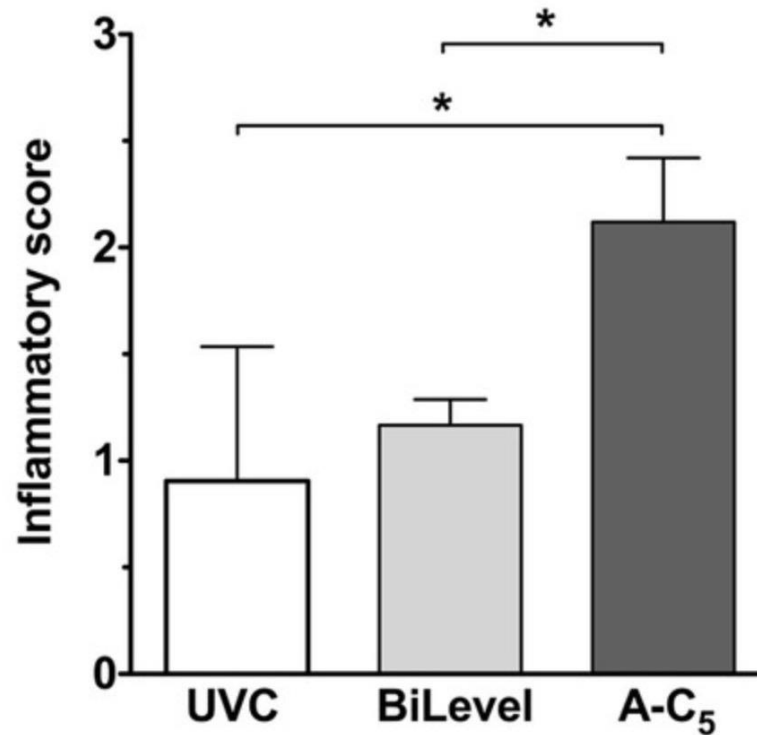
# Ventilator-associated lung injury



# Lung injury after only 2 h of ventilation



# Protective ventilation reduces inflammation

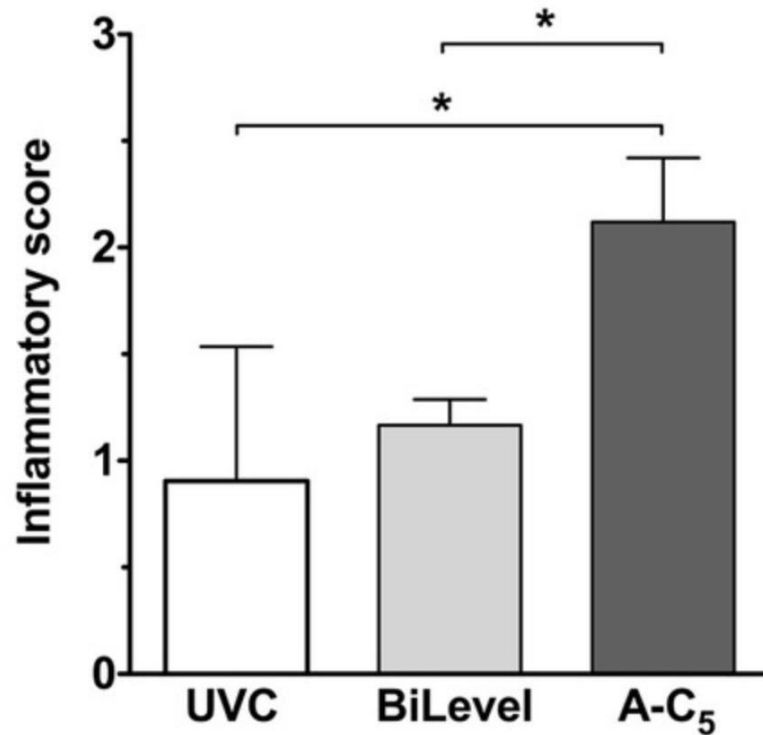


\* $p < 0.05$

\*\* $p < 0.01$

Schulzke et al., Ped Research 2009

# Protective ventilation reduces inflammation



\*p<0.05

\*\*p<0.01



Ventilation is a powerful tool – even if used only for a few hours or days!

# Incorporate external evidence

---

- Respiratory care is not a personal playground
- Our clinical studies (observational, RCT, systematic review)
  - Ventilation modalities, trigger mechanisms
  - Prevention and prediction of chronic lung disease
- So much more evidence out there!
  - Annual entry-level course on evidence-based medicine (EBM) for junior doctors at UKBB
  - Twice weekly EBM bedside teaching rounds for students and doctors



# *Hôtel Pension de la C...*

Conventional  
ventilation



Non-invasive  
respiratory  
support

High-  
frequency  
oscillatory  
ventilation

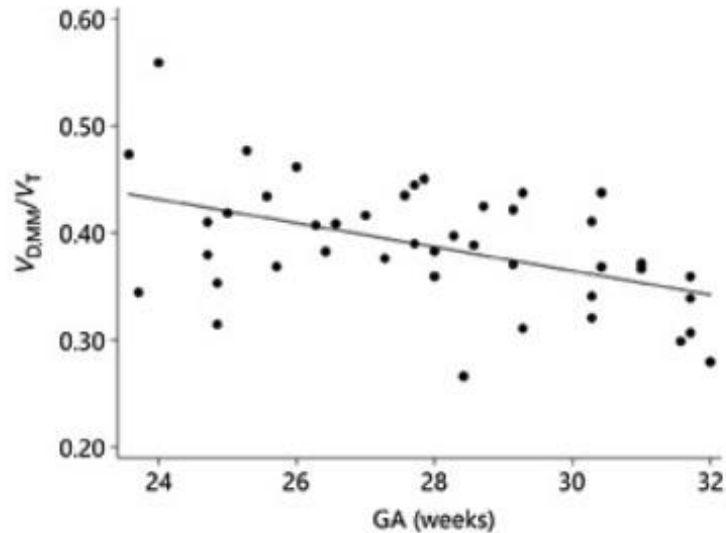
---

2x3

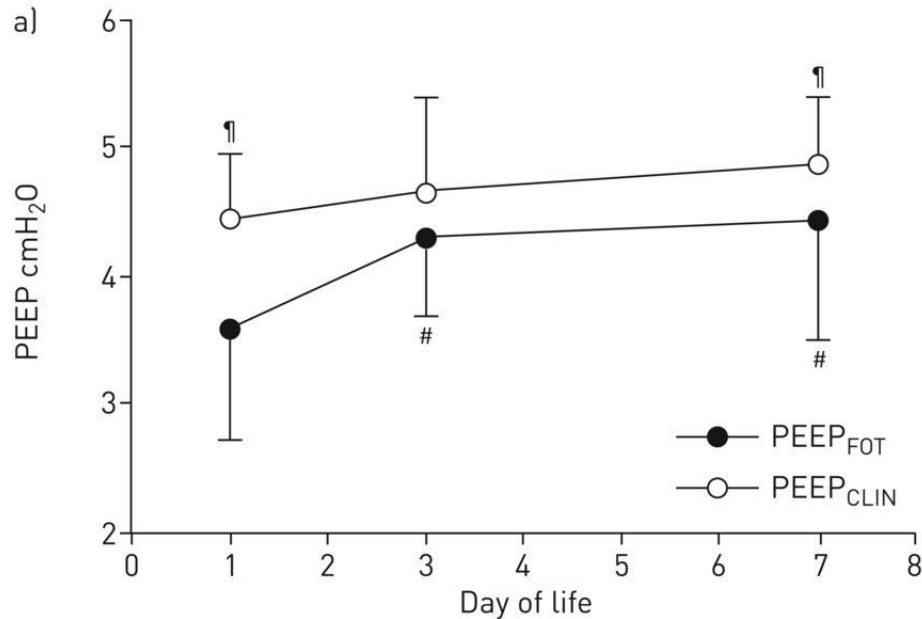
Important aspects for  
clinicians/neonatologists

# Tidal volume - one size fits all?

## Dead space to tidal volume ratio



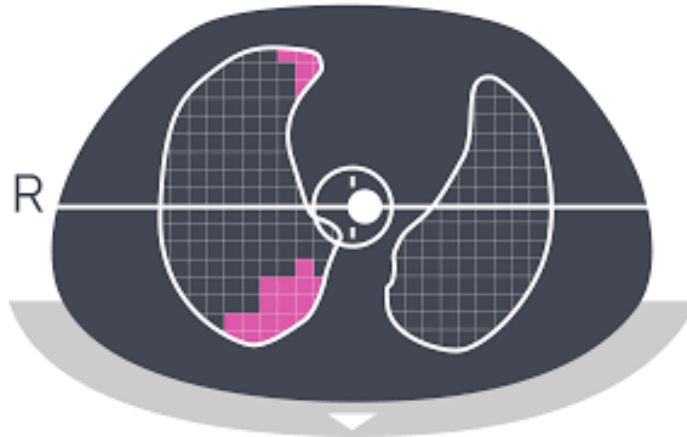
# PEEP – physiological basis





# PEEP titration tool under development

EIT: Optimal volume distribution



FOT: Optimal compliance



# It's not over after leaving the NICU

---

> [Eur Respir J.](#) 2020 Jan 2;55(1):1900788. doi: 10.1183/13993003.00788-2019. Print 2020 Jan.

## European Respiratory Society guideline on long-term management of children with bronchopulmonary dysplasia

Liesbeth Duijts <sup>1 2</sup>, Evelien R van Meel <sup>3</sup>, Laura Moschino <sup>4</sup>, Eugenio Baraldi <sup>4</sup>,  
Magda Barnhoorn <sup>5</sup>, Wichor M Bramer <sup>6</sup>, Charlotte E Bolton <sup>7</sup>, Jeanette Boyd <sup>8</sup>,  
Frederik Buchvald <sup>9</sup>, Maria Jesus Del Cerro <sup>10</sup>, Andrew A Colin <sup>11</sup>, Refika Ersu <sup>12 13</sup>,  
Anne Greenough <sup>14</sup>, Christiaan Gremmen <sup>5</sup>, Thomas Halvorsen <sup>15 16</sup>, Juliette Kamphuis <sup>8</sup>,  
Sailesh Kotecha <sup>17</sup>, Kathleen Rooney-Otero <sup>18</sup>, Sven Schulzke <sup>19</sup>, Andrew Wilson <sup>20</sup>,  
David Rigau <sup>21</sup>, Rebecca L Morgan <sup>22</sup>, Thomy Tonia <sup>23</sup>, Charles C Roehr <sup>24 25</sup>,  
Marielle W Pijnenburg <sup>3</sup>

3x3

Important aspects for researchers

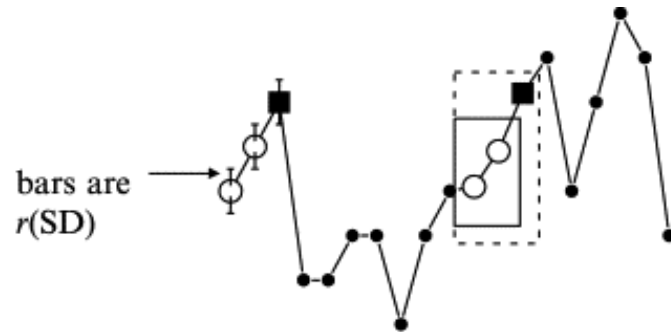
“It is difficult to make predictions,  
especially about the future”

Old Danish proverb



# Mathematical prediction tools

## Sample entropy (SampEn)



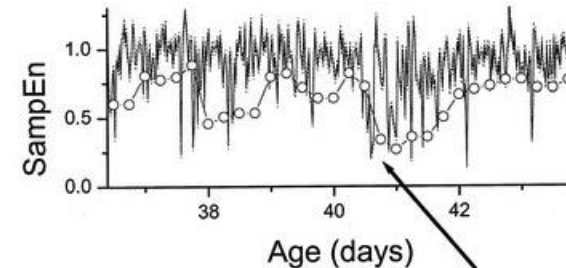
■  $A_i$  = number of matches of length  $m+1$  with  $i$ th template

○  $B_i$  = number of matches of length  $m$  with  $i$ th template

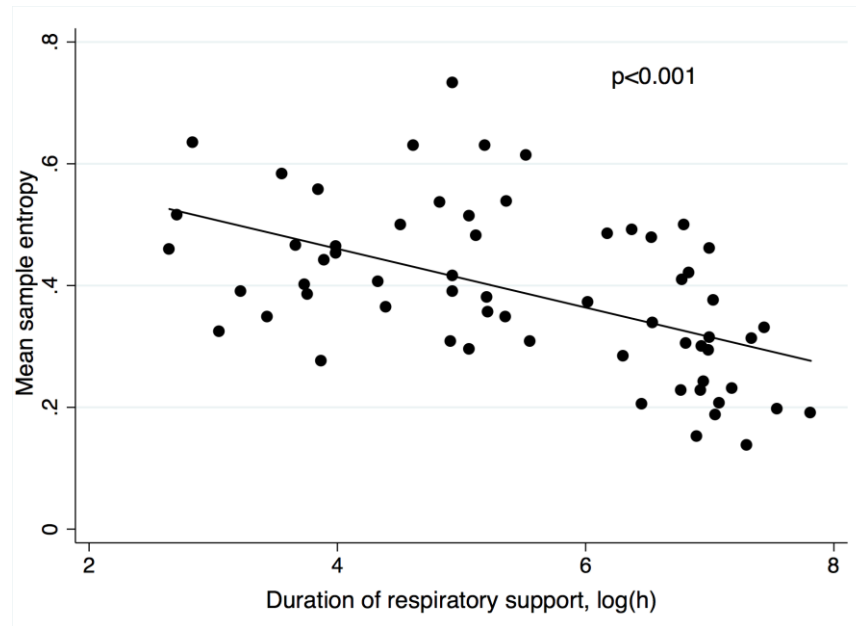
$$\text{ApEn} \approx \Sigma -\log (1+A_i)/(1+B_i)$$

$$\text{SampEn} = -\log ((\Sigma A_i)/(\Sigma B_i)) = -\log A/B$$

For regular, repeating data,  $A/B$  nears 1 and entropy nears 0.



# Predicting duration of respiratory support



# Thank you for the support

---



FONDS NATIONAL SUISSE  
SCHWEIZERISCHER NATIONALFONDS  
FONDO NAZIONALE SVIZZERO  
SWISS NATIONAL SCIENCE FOUNDATION

